



**Fero**  
Consulting Ltd.

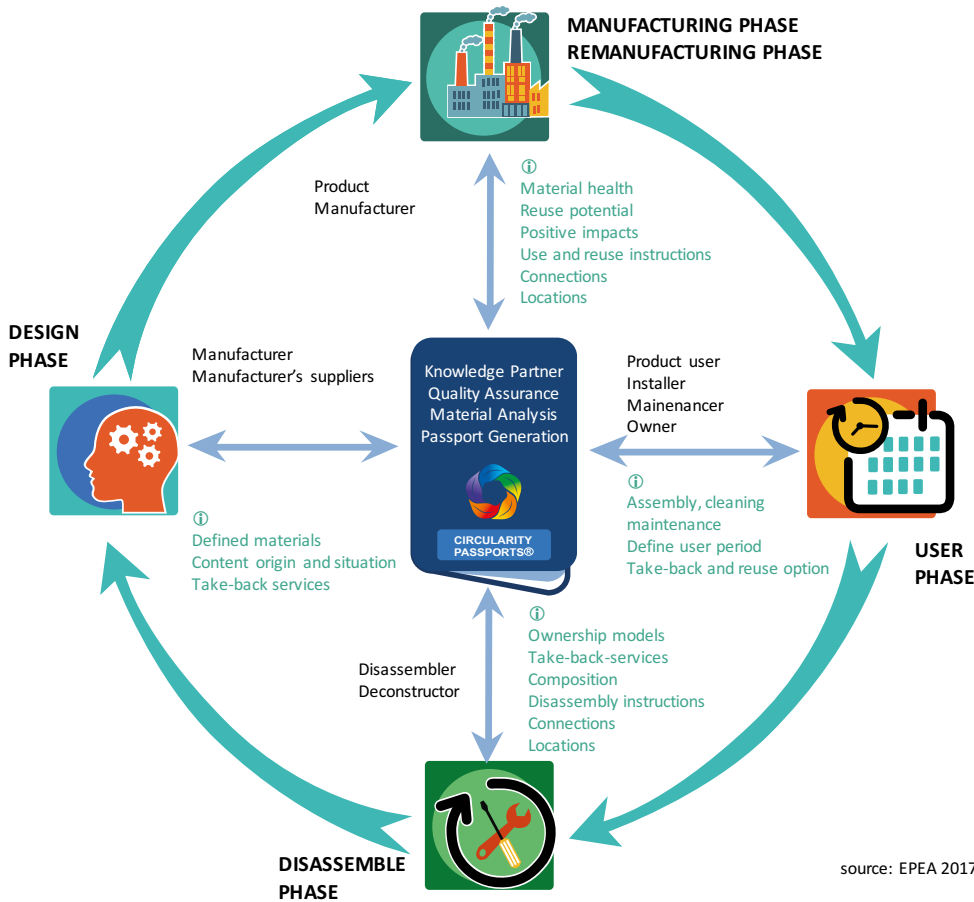
Sustainability strategy  
it's the

development;  
clever choice

## Material Passports

Delivering healthier environments through enhanced knowledge of materials used within buildings. "Going beyond BREEAM"

More and more businesses are recognising the huge potential for new approaches to address waste problems, improve carbon and energy efficiencies, reduce raw material dependencies and generally improve the sustainability credentials of the business.



# IN THIS ISSUE

## MATERIAL PASSPORTS

Recognising the huge potential for manufacturing and construction

Using the right materials at the right time.

Providing clients with enhanced material intelligence.

Whole life cycle planning, from cradle to grave

Improving the sustainability credentials of your business.

# NEWSLETTER

Bob Crawford  
07500 962548

www.feroconsulting.uk  
bobcrawford@feroconsulting.uk



**Fero**  
Consulting Ltd.

# 'Whole life' material management

We must drive and create new models for resource productivity in any business to survive. Re-designing products and value chains to use fewer materials which last longer and can be circled back into the production process is vital.

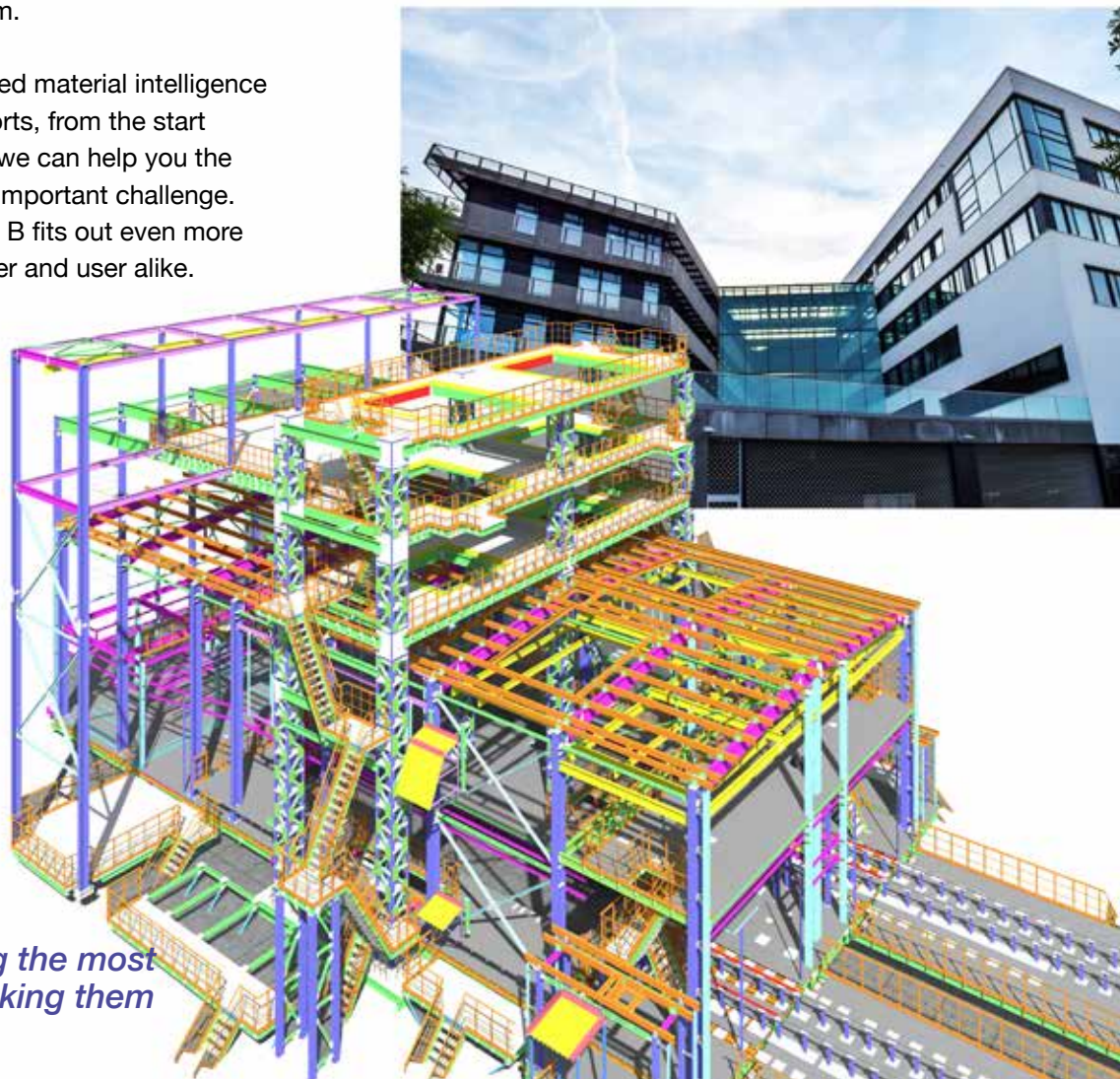
Improved knowledge about the products, components and systems from the building design stage throughout the construction and in use phase of the building will help improve indoor environments.

But it can also help deliver low-carbon new build and renovation projects through encouraging the use of the right materials at the right time.

Reducing materials waste, creating safer material loops, driving out potentially toxic substances could substantially contribute to better management and more efficient use of scarce raw materials, and help deliver net positive environmental footprints of cities and buildings-for the long term.

By providing you with enhanced material intelligence in the form of Material Passports, from the start of the building design stages we can help you the developer deliver on such an important challenge. We can make Category A and B fits out even more beneficial to the building owner and user alike.

“understanding the whole life cycle of a building and using that knowledge to deliver savings for clients’



*Lets talk about making the most out of your assets, making them work harder for you!*

# NEWSLETTER

Bob Crawford  
07500 962548

[www.feroconsulting.uk](http://www.feroconsulting.uk)  
[bobcrawford@feroconsulting.uk](mailto:bobcrawford@feroconsulting.uk)

